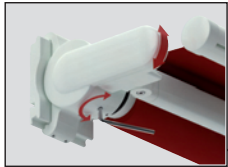
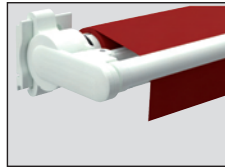


Folding-arm awning markilux 930 swing



pitch adjustment is possible from 5° to 80°. The awning is always horizontal - as shown - when retracted



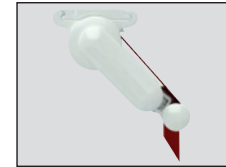
Face fixture



side view showing gearbox eye for manual operation (standard)



Face fixture



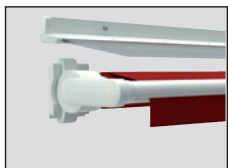
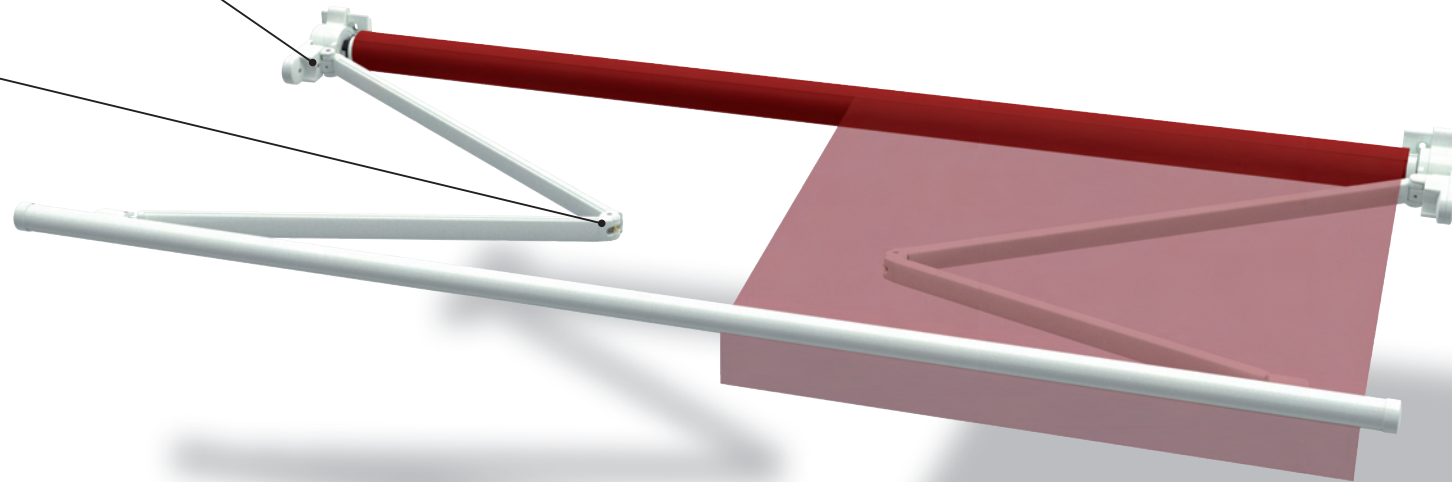
during extension at a pitch of 45°



during extension at a pitch of 80°



folding arm with round, steel-link chain

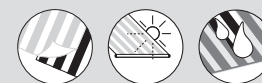


markilux 930 with system coverboard (optional)

Standard RAL colours:



standard:



optional accessories:

