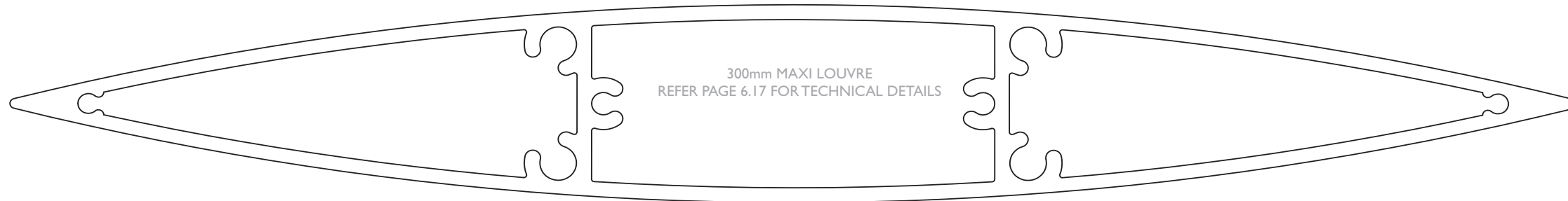
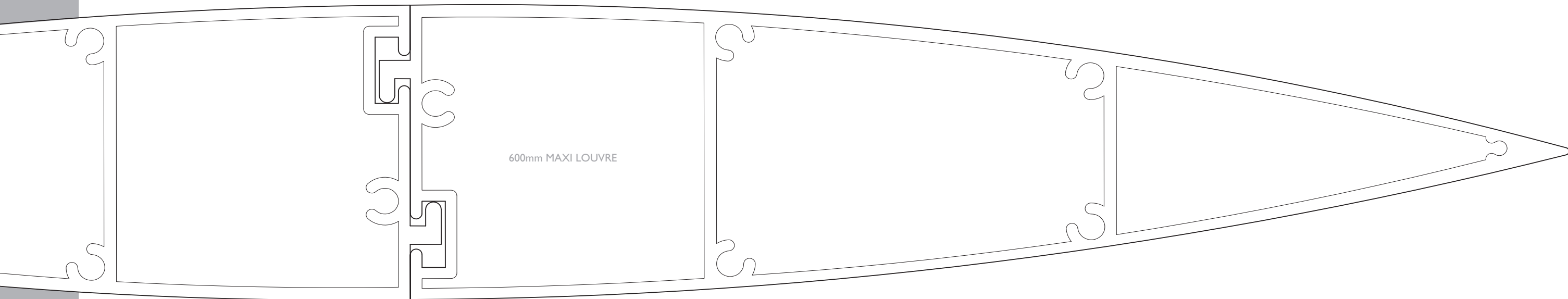


TECHNICAL DETAILS // 300 MAXI LOUVRE



TECHNICAL DETAILS // 600 MAXI LOUVRE



BLADE SPECIFICATIONS

// Weight per square metre - Blades fixed at 600mm _____ 24.62 kg/sqm
 // Weight per lineal metre _____ 14.74 kgm
 // Actual blade width _____ 600 mm

SPANS AT A GLANCE

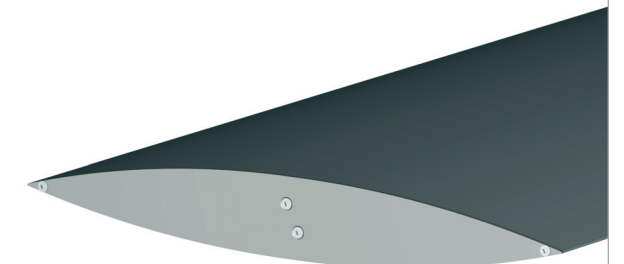
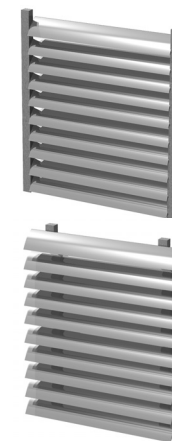
Important: Refer to section 12 for engineering details. Factors such as climate, terrain, shielding, location, type of structure all contribute to determine spans.

WIND ZONE	INSIDE	LOW	MED	HIGH	VERY HIGH
Factored wind speed at building	Self wt	32m/s-115km/h	37m/s-133km/h	44m/s-158km/h	50m/s-179km/h
Ultimate limit state loads (kPa)		+1.1 & -1.38	+1.48 & -1.85	+2.09 & -2.61	+2.70 & -3.38
600mm Maxi Louvre Max. Horiz.	7150	6550	5600	4700	4100

INSTALLATION OPTIONS

// **END FIXED**
 Louvres at any pitch
 Louvres at any centre

// **BRACKET FIXED**
 Louvres at any pitch
 Louvres at any centre



← OPEN PAGE TO VIEW TECHNICAL DETAILS FOR 300 & 600 MAXI LOUVRE